



Q30

QUEENSLAND FACILITIES PLAN
TOWARDS 2030



Welcome to
NOWOGURRA BORUL

ACKNOWLEDGEMENT OF COUNTRY

We acknowledge the Traditional Owners of the land across Australia and acknowledge we play our great game on this land and respect the cultures of all First Peoples, their contribution to our nation and contribution to the game of Australian Football.

PETER WARE

COURTENAY DEMPSEY
CAIRNS
MORNINGSIDE

CONTENTS

Executive Summary	4
Welcome from the Head of AFL Queensland	6
The benefits of a plan for Queensland	9
Strategic context	10
The state of play	11
AFL in Queensland	12
Gold Coast SUNS and Brisbane Lions	13
Queensland facility supply	14
AFL community facilities in Queensland	15
Investment in AFL facilities	16
Stakeholder Insights	17
AFL Queensland facilities priorities	18
AFL Queensland Facilities Framework	19
South East Queensland Priorities	24
Regional Queensland Priorities	26

Published: May 2024.

Cover: Nathan Road Sports Complex, Kippa-Ring.

Left: Official opening of the AFL Queensland Yarning Circle at Leyshon Park (2023).



EXECUTIVE SUMMARY

We are proud that our game provides opportunities for all Queenslanders to lead healthy and active lives, bringing people together and connecting local communities through a shared passion for AFL. *The AFL Queensland Facilities Plan Towards 2030 (Q30)* ensures that the places in which our communities play, umpire, volunteer and watch AFL are welcoming and accessible, and support our community to prosper and grow.

With more than 68,000 registered participants and 135,000 school competition and program participants across Queensland in 2023, expanding the provision of facilities for AFL is vital to ensuring the future growth of the game.

The success of the 2020 Facilities Plan is evident in the 19% increase in ovals, 20% increase in ovals equipped with competition lighting, and a notable 76% growth in gender-neutral change rooms by the end of 2023.

The ways in which people access football continues to expand, with more ways to play further expanding the diversity of AFL participants, umpires and volunteers.

We will continue to improve our facilities to ensure that they are welcoming and accessible to people of all abilities, cultures and genders across our diverse football community.

We will work with all levels of government, clubs and stakeholders to invest in facilities that enhance user experiences and increase the capacity of our facility network.

By 2030, we are aiming for:

- 90% of player change rooms to be gender neutral
- 90% of umpire change rooms to be gender neutral
- 70% of ovals to have competition or training standard lighting
- More schools and flexible green spaces to be used as competition and training venues

Q30 establishes strategic priorities under six focus areas aligning with the national AFL infrastructure goals to achieve these aims.

AFL Queensland will work with our partners to jointly invest in facilities that grow the game, create more accessible environments and increase the diversity of the football community across Queensland.





National Goal 1: Build the capacity of community football

- AFLQ Focus Area 1:
Enhance Capacity
- AFLQ Focus Area 2:
Safe and Inclusive

National Goal 2: Enhance elite, state league and talent infrastructure

- AFLQ Focus Area 1:
Elite Experience
- AFLQ Focus Area 2:
Connected Pathways

National Goal 3: Drive innovation and growth

- AFLQ Focus Area 1:
Better Together
- AFLQ Focus Area 2:
Embrace Innovation



WELCOME FROM THE HEAD OF AFL QUEENSLAND

The heartbeat of the AFL in Queensland lies in our game at the community and grassroots level. Our aim is to continue to help build local football across the state with the vision of having AFL connected to every home in Queensland.



In order to achieve this vision, appropriate facilities are critical in recruiting and retaining players, coaches, umpires and volunteers in our game.

AFL is booming in Queensland. In 2023, we had more than 68,000 registered participants playing our game from NAB AFL Auskick to Senior Football.

The involvement in our game is not limited to playing for a team each week. In 2023, we had over 1,800 registered umpires across the state, training at 15 senior and youth venues across Queensland.

The opportunity to play or umpire assists thousands of Queenslanders in keeping fit and active, while connected to their local footy community.

Our Queensland school competitions continue to thrive, with more than 35,000 students participating in 2023 and over 700 teams playing in the AFL Queensland Schools Cup. In 2024, this figure is set to grow through the expansion of existing competitions and the forming of new partnerships across the state.

The growth in our school competitions is supported by the delivery of in-school programs and a suite of resources available to teachers through the AFL Schools Program.

Our game is growing and changing rapidly due to new trends in participation, so we continue to diversify our offerings, giving participants the option to find their own way to play, including the Queensland Wheelchair Football League, Inclusion League, NAB AFL Superkick and AFL NINES.

To keep up with this growth, we must continue to invest in our football ecosystem by growing our facilities and our coaching, umpiring and volunteer networks.

Our Women and Girls Action Plan strives for equal representation and participation in our game by 2033.

As we continue to build on our female focused pathways, we work towards equal opportunity for women to play, coach, umpire, officiate, administer and govern the game.

With the goal of even female and male participation in every facet of the game, AFL Queensland's priority is to maximise the carrying capacity of existing venues and the quality and functionality of supporting venue infrastructure. Lighting, change rooms and access to new greenspace will continue to be a critical priority. As well as improving existing facilities, there will be a great need to seek new facilities and infrastructure to sustain our growth in Queensland.

We are grateful to the State Government for their support of our game and improving facilities. The Grand Final Facilities Fund is a joint AFL and State Government legacy of the 2020 Toyota AFL Grand Final that was held in Queensland. To date, this fund has contributed to more than 100 projects across Queensland.

Our Venue and Government team at AFL Queensland look forward to working with all levels of government to deliver this plan towards 2030. The team will continue to help provide direction, support and advocacy as we strive to create welcoming, safe and inclusive spaces for Queenslanders to connect with our game.

Trisha Squires
Head of AFL Queensland





THE BENEFITS OF A PLAN FOR QUEENSLAND

The implementation of Q30 delivers benefits in communities across Queensland. Our game inspires and connects communities every day, and our Plan for the development of AFL facilities throughout Queensland ensures that we all share in the positive outcomes of participating in AFL.



Supporting Women and Girls

Women and girls are supported to participate, officiate, volunteer and lead in welcoming environments in clubs across Queensland



Health and Wellbeing

AFL participation generates positive health and wellbeing outcomes by creating more physically active, connected and supportive communities



Economy and Job Creation

The AFL industry generates significant economic benefit for Queensland, from community clubs through to the elite AFL competition



Diversity & Inclusion

Our football community is diverse, creating opportunities to celebrate our uniqueness through our common love for the game



Investing Together

We will continue to invest in projects that support the growth of AFL and acknowledge our responsibility to contribute to the development of AFL facilities



Celebrate Indigenous Culture

We will celebrate the contribution of First Nations People to AFL and support the development of facilities that promote participation and talent pathways



Innovation and Technology

Embracing innovation in facility design, development and maintenance will create new ways to access AFL and support efficient facility operation



Environment & Climate Change

We will continue to support our clubs and partners to minimise their impact on the environment and recover from the impact of climatic events and disasters



Safer Communities

Creating safe, inclusive and resilient environments will enable more people to benefit from the positive impacts of participating, officiating and volunteering

STRATEGIC CONTEXT

The AFL National Infrastructure Plan Towards 2030 establishes the infrastructure priorities that support the growth and expansion of AFL across Queensland.

Q30 draws on the direction of the AFL National Facilities Plan Towards 2030 and the AFL Preferred Facility Guidelines to ensure recommendations are strategically aligned.

Key government strategies, including Activate! Queensland, Sport2030 and Play Well, have been used to ensure that our joint investment in facilities delivers outcomes for all stakeholders.

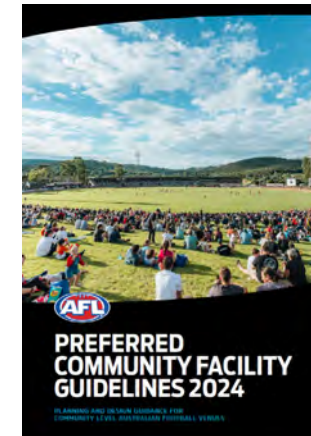
The strategic directions are based on detailed evidence and analysis, outlined in the State of Play report.

This report collates the analysis of facility audit data, participation trends and population forecasts to establish the key drivers for growing facility demand across Queensland.

The strategic priorities developed have been informed through consultation with a range of stakeholders, including local government authorities that are at the forefront of planning for the future AFL facility needs of their communities.

Q30 is supplemented by local government area and region summaries, and a statewide project priority listing that will be continuously updated to reflect the changing needs and demands of communities.

The AFL Queensland Facilities Framework (page 19) establishes the facility development goals and focus areas, with key priorities for South East Queensland and Regional Queensland outlined in further detail on pages 24 and 26.





THE STATE OF PLAY

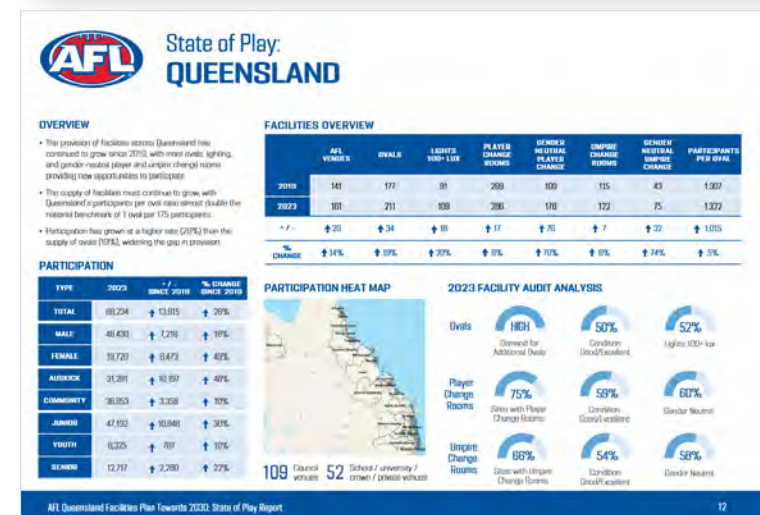
The development of Q30 has been driven by participation and demographic trends, facility audit data and consultation with key stakeholders. The analysis captured within the State of Play Report establishes the evidence base for our facility development priorities as we grow towards 2030.

AFL Queensland is committed to an evidence-based approach to planning for facilities, ensuring that our development priorities reflect the needs of our community.

The State of Play Report establishes the key trends relevant to facility demand for local government authorities and regional areas, allowing our strategic priorities to be tailored for each community.

The State of Play Report and analysis relevant to each local government authority and regional area is available to assist stakeholders in planning for future facility development.

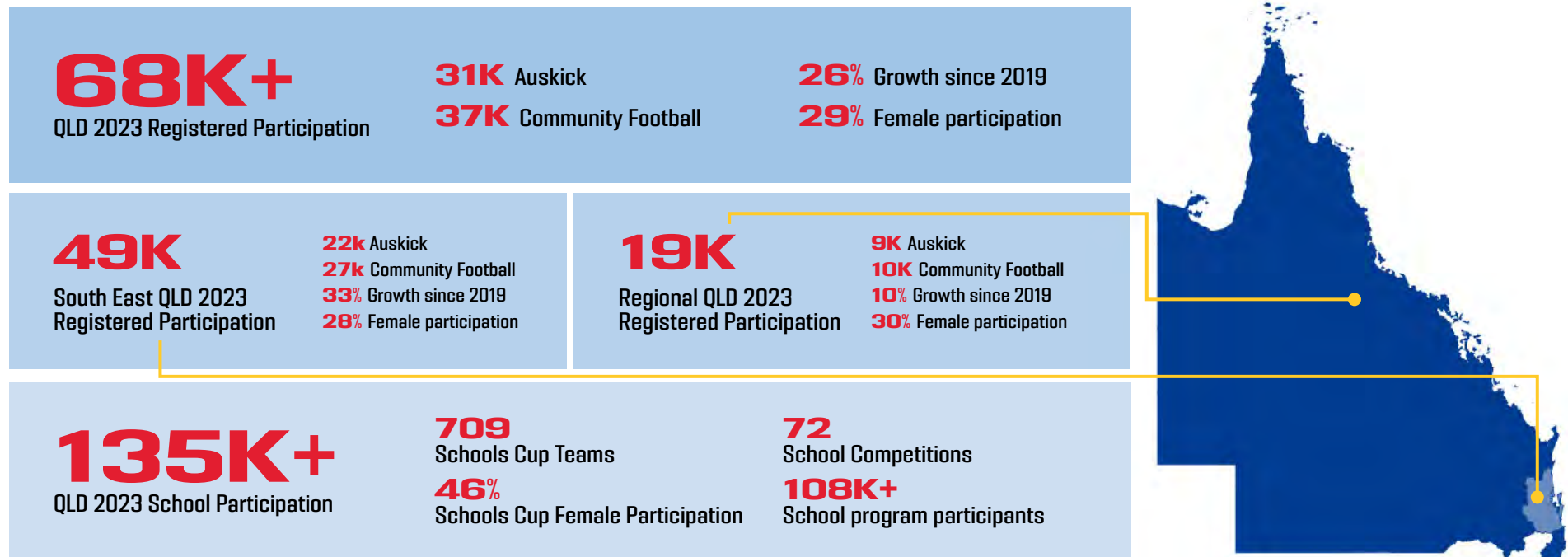
Through the ongoing auditing of facilities and analysis of participation trends, we will ensure that local government authorities and land-owners have access to up-to-date information to inform facility investment planning and decision-making.



AFL IN QUEENSLAND

AFL Queensland is striving to provide clear pathway options to enable participants to follow their football journey in Queensland.

From fast-growing communities in South East Queensland to our regional cities and remote communities, AFL Queensland aims to enable options for all Queenslanders to participate in our game.





LIONS & SUNS 2023 AT A GLANCE



MEMBERSHIP



54,676 members

MEMBERSHIP MORE THAN
DOUBLED SINCE 2017



67%
male



33%
female

ATTENDANCE



30K+ average home
game attendance

36K LARGEST HOME GAME ATTENDANCE

7 SELL OUT HOME GAMES



25% of attendees are from
outside Queensland

SOCIAL MEDIA

615,000+ SOCIAL MEDIA FOLLOWERS



MEMBERSHIP



23,483 members

MEMBERSHIP MORE THAN
DOUBLED SINCE 2017



68%
male



32%
female

ATTENDANCE



442K+ total home & away
game attendance **AVERAGE 19K+**

22K LARGEST HOME GAME ATTENDANCE



36% of ticket purchasers
from outside drive market

SOCIAL MEDIA

339,000+ SOCIAL MEDIA FOLLOWERS
(25% YOY GROWTH)

QUEENSLAND FACILITY SUPPLY

Queensland's AFL facility supply continues to expand, supporting participation growth at all levels and creating more opportunities to play. The facility hierarchy determines the standard of facilities required for each level of play, ensuring that facilities are fit-for-purpose and appropriately developed.

AFL Facility Hierarchy

Indoor	Junior / School	Remote	Local	Regional	State	Stadiums
4 venues	38 venues	4 venues	92 venues	6 venues	21 venues	2 venues
<ul style="list-style-type: none"> - Club Training - Community Programs - High Performance - Coaching / Umpire - Education - Innovative Formats 	<ul style="list-style-type: none"> - Junior Club Football - School Football - Club Training - Auskick 	<ul style="list-style-type: none"> - Local Club Football - Club Training - Auskick 	<ul style="list-style-type: none"> - Local Club Football - Club Training - Auskick 	<ul style="list-style-type: none"> - League HQ / Finals - Talent Pathways - Local Club Football - Club Training - Umpire Training 	<ul style="list-style-type: none"> - AFLW Matches - State League Football - AFL Club HQ / Training - League HQ / Finals - Talent Pathways 	<ul style="list-style-type: none"> - AFL/AFLW Matches - AFL/AFLW Club Training
						



AFL COMMUNITY FACILITIES IN QUEENSLAND

Our targeted investment and partnership approach has continued to expand and enhance the network of AFL facilities across Queensland.

2023 FACILITY AUDIT



161

AFL Venues
+20 since 2019



211

Ovals
+34 since 2019



286

Change Rooms
+17 since 2019



122

Umpire Rooms
+7 since 2019



322

Players per Oval
National benchmark: 175



52%

Ovals with 100+ Lux Lighting
+18 since 2019



75%

Sites with Player Change Rooms
+2 since 2019



66%

Sites with Umpire Change Rooms
+1 since 2019



60%

Gender Neutral Player Change Rooms
+76 since 2019

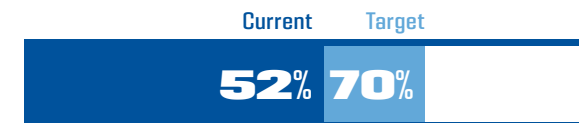


58%

Gender Neutral Umpire Change Rooms
+32 since 2019

BY 2030, OUR GOALS ARE:

Provision of Ovals with Competition or Training Standard Lighting



Provision of Gender Neutral Player Change Rooms



Provision of Gender Neutral Umpire Change Rooms



Note: Stadia, indoor facilities and non-standard green spaces are not included in the 2023 facility audit analysis.

INVESTMENT IN AFL FACILITIES

Through our collaboration with all levels of government, AFL Queensland is committed to creating a legacy of co-investment into facility projects that grow the game.

This collaborative approach has seen the AFL Grand Final Facilities Fund support over 100 projects worth a total value of more than \$120 million in partnership with the Queensland Government.

Our aspiration is to continue to grow our joint investment in facility projects that generate outcomes for communities across Queensland.

The AFL's Breaking New Ground initiative aims to broaden our collaboration with schools and land managers to expand access to facilities that support community and school AFL.

The initiative supports investment in the planning, design and development of AFL facilities in schools and other innovative locations, encouraging new ways of developing partnerships and expanding facility provision.

With our track record of proactively investing in facilities and our commitment to the future growth of the game, our goal is to ensure that all communities can access AFL in high quality, welcoming and inclusive environments.

AFL GRAND FINAL FACILITIES FUND

The AFL Grand Final Facilities Fund is a legacy of 2020 AFL Grand Final held at The Gabba. The AFL has supported contributions to over 100 projects, including facility development, the provision of goal posts and project planning support.

\$8M
AFLQ & QLD Government
Investment

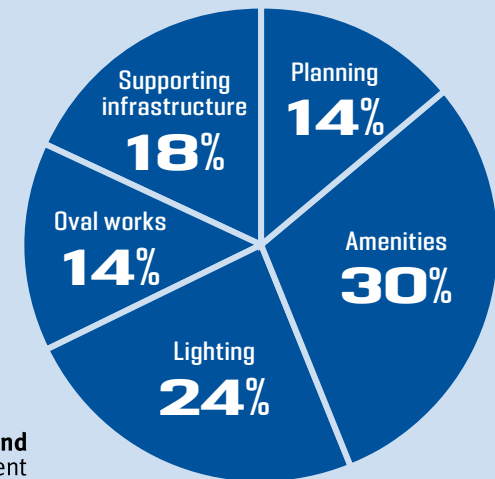
\$120M+
Total Project Value

100+
Community
Facility Projects

65%
Proportion
of funding:
South East QLD

35%
Proportion
of funding:
Regional QLD

Supported by:
 Queensland
Government



STAKEHOLDER INSIGHTS

Through engagement with our stakeholders and partners, we have identified a range of opportunities to grow the network of AFL facilities across Queensland.



Enhancing Facility Capacity

Creating additional facility capacity to cater for increasing participation and areas of population growth, and reduce pressure on existing facilities



Fit-For-Purpose

Develop facilities that are fit-for-purpose for the level of AFL supported while considering the ongoing operational, renewal and maintenance costs



Sustainability and Climate

Improving the sustainability of facilities, reducing resource use and cost for clubs, and managing climate impacts



Balancing the Network

Improving the provision, capacity and quality of facilities at all levels of the facility hierarchy to create a balanced network of facilities



Inclusion and Accessibility

Ensuring people of all genders, cultures and abilities have equal access to AFL is vital to ensure sustained participation growth



Talent Pathways

Create a network of facilities that support today's Auskick and club participants to become tomorrow's Lions and SUNS



Growth Through Innovation

Exploring innovative ways to grow facility capacity via access to non-standard facilities through partnership initiatives such as Breaking New Ground



Developing our Clubs

Improving the capability of clubs and volunteers to attract and retain participants, provide local participation opportunities and connect talent pathways

AFL QUEENSLAND FACILITY PRIORITIES





AFL QUEENSLAND FACILITIES FRAMEWORK

The AFL Queensland Facilities Framework aligns with the AFL National Facilities Plan Towards 2030 to prioritise the development of facilities that will drive participation growth, inclusion and innovation, and inspire the next generation of players, coaches, umpires, officials and fans.

AFL National Goals	Goal 1: Build the capacity of community football		Goal 2: Enhance elite, state league and talent infrastructure		Goal 3: Drive innovation and growth	
AFL National Objectives	Australian football facilities that are fit-for-purpose, meet evolving local community needs and enhance the football experience for all		High quality infrastructure and playing surfaces that meets the needs of AFL/W and State League competitions and talent pathways		New, bold and innovative approaches to providing venues that increase access to football for more people in more locations	
AFL QLD Focus Areas	Focus Area 1: Enhance Capacity	Focus Area 2: Safe and Inclusive	Focus Area 1: Elite Experience	Focus Area 2: Connected Pathways	Focus Area 1: Better Together	Focus Area 2: Embrace Innovation
AFL QLD Strategic Priorities	1.1.1 Maximise the carrying capacity of existing facilities 1.1.2 Enhance the number of lit venues to support training and competition 1.1.3 Drive the supply of new facilities in areas most in need	1.2.1 Provide more gender-neutral change rooms 1.2.2 Improve accessibility for our diverse football community 1.2.3 Increase facility provision for umpires, officials and volunteers	2.1.1 AFLW venues that support competition expansion 2.1.2 Engage AFL and AFLW fans through high quality match day experiences	2.2.1 Enhance State League venues to inspire and support current and future talent 2.2.2 Through a network of talent pathway venues, create opportunities to develop players, umpires and officials	3.1.1 Partner with all levels of government to invest in joint priority projects 3.1.2 Partner with schools and other landowners to develop facilities that provide AFL access and connection 3.1.3 Promote shared use and flexible approaches to facility operation and management	3.2.1 Increase access to non-standard facilities and green spaces for training and programs 3.2.2 Identify opportunities to access indoor facilities to deliver AFL programs 3.2.3 Invest in ESD technologies and practices that enhances facilities and user experiences

GOAL 1: BUILD THE CAPACITY OF COMMUNITY FOOTBALL

Australian football facilities that are fit-for-purpose, meet evolving local community needs and enhance the football experience for all.

Focus Area 1: Enhance Capacity	Key Actions
<ul style="list-style-type: none"> 1.1.1 Maximise the carrying capacity of existing facilities 1.1.2 Enhance the number of lit venues to support training and competition 1.1.3 Drive the supply of new facilities in areas most in need 	<ul style="list-style-type: none"> ▪ Work with LGAs to plan for future facility needs based on population, participation and demand analysis ▪ Support and advocate for projects that generate increased facility capacity and flexibility ▪ Monitor facility capacity and work with LGAs and land owners to identify opportunities to address areas of deficit
Focus Area 2: Safe and Inclusive	Key Actions
<ul style="list-style-type: none"> 1.2.1 Provide more gender-neutral change rooms 1.2.2 Improve accessibility for our diverse football community 1.2.3 Increase facility provision for umpires, officials and volunteers 	<ul style="list-style-type: none"> ▪ Engage with LGAs and land owners in the design and development of facilities that cater for all participants ▪ Partner with LGAs and land owners to increase the provision of gender neutral change rooms and umpire change rooms ▪ Use facility audit data to identify opportunities to improve accessibility at community AFL venues



Case Study: Boyne Island Tannum Sands

The installation of competition standard lighting at Boyne Island Tannum Sands has extended the opportunity for training and game days, offering 15 additional hours of field time each week. Female participation tripled since 2019, and participation across all levels continues to grow. Funding is now secured to develop gender neutral changeroom facilities to enhance the experience of all participants.

GOAL 2: ENHANCE ELITE, STATE LEAGUE AND TALENT INFRASTRUCTURE

High quality infrastructure and playing surfaces that meets the needs of AFL, AFLW, State League competitions and talent pathways

Focus Area 1: Elite Experience	Key Actions
<p>2.1.1 AFLW venues that support competition expansion</p> <p>2.1.2 Engage AFL and AFLW fans through high quality match day experiences</p>	<ul style="list-style-type: none"> Advocate for the ongoing improvement of stadia and training facilities that support AFL and AFLW Work with stadium and facility managers to improve accessibility and infrastructure to enhance spectator experience Support Gold Coast SUNS and Brisbane Lions to engage with the football community through local clubs, schools and facilities
Focus Area 2: Connected Pathways	Key Actions
<p>2.2.1 Enhance State League venues to inspire and support current and future talent</p> <p>2.2.2 Through a network of talent pathway venues, create opportunities to develop players, umpires and officials</p>	<ul style="list-style-type: none"> Collaboratively work towards State League venue standards, audit facilities and plan for required upgrades with identified clubs Identify opportunities to widen the reach and improve the quality of talent pathways in partnerships with LGAs, land owners and AFL clubs Establish high performance umpire training facilities to support the development of umpiring talent



Case Study: Brighton Homes Arena

The creation of Brighton Homes Arena provides a new home for the Brisbane Lions Football Club and destination for community use. The facility is supported by a 600 person grandstand, new playing surface, gym and indoor training field that all underpin a venue which adequately supports the hosting of AFLW games along with a training space for both the men and women’s AFL teams.

GOAL 3: DRIVE INNOVATION AND GROWTH

New, bold and innovative approaches to providing venues that increase access to football for more people in more locations.

Focus Area 1: Better Together	Key Actions
<p>3.1.1 Partner with all levels of government to invest in joint priority projects</p> <p>3.1.2 Partner with schools and other landowners to develop facilities that provide AFL access and connection</p> <p>3.1.3 Promote shared use and flexible approaches to facility operation and management</p>	<ul style="list-style-type: none"> ▪ Explore opportunities to implement joint funding initiatives with government, such as the AFL Grand Final Facilities Fund ▪ Drive the implementation of the Breaking New Ground initiative to grow facility development partnerships with schools and education providers ▪ Pursue the establishment of consistent access arrangements with schools at regional and/or state levels
Focus Area 2: Embrace Innovation	Key Actions
<p>3.2.1 Increase access to non-standard facilities and green spaces for training and programs</p> <p>3.2.2 Identify opportunities to access indoor facilities to deliver AFL programs</p> <p>3.2.3 Invest in ESD technologies and practices that enhances facilities and user experiences</p>	<ul style="list-style-type: none"> ▪ Partner with LGAs and land owners to identify opportunities to access green spaces for training and program delivery ▪ Expand the use of non-traditional venues suitable for hosting new AFL formats and programs ▪ Explore opportunities to deliver indoor AFL programs in partnership with facility managers ▪ Investigate opportunities for synthetic/hybrid surfaces to increase capacity in areas of high demand



Case Study: Iona College

The partnership between Iona College and AFL Queensland to deliver floodlights enhances the capacity of the lower playing fields to cater for community AFL. The project is supported by the AFL's Breaking New Ground initiative which is increasing access to schools and innovative venues through partnerships and co-investment.



SOUTH EAST QUEENSLAND PRIORITIES

As South East Queensland experiences ongoing participation growth, AFL facilities must evolve in tandem, ensuring that communities have the necessary infrastructure to actively participate in the sport.

With the population of South East Queensland forecast to grow by approximately 20% between 2021-2031, and 2023 participation in South East Queensland approaching 49,000 (72% of total participation), driving facility supply in areas of most need is imperative to the growth of the game.

Maximising the carrying capacity of existing facilities through targeted investment will enable our clubs to harness growing demand.

Creating safe and inclusive environments for all participants will ensure AFL is accessible to everyone, including emerging communities and people engaging with AFL for the first time.

Focus Areas

1.1 Enhance Capacity

- Partner with local government to plan for the delivery of new venues in areas of population growth
- Build the capacity of existing venues, with a focus on increasing the number of venues with competition and training standard lighting

1.2 Safe and Inclusive

- Increase the proportion of venues that provide gender-neutral player change facilities by 5% year-on-year
- Increase the proportion of venues that provide gender neutral umpire change facilities by 5% year-on-year

2.1 Elite Experience

- Partner with all levels of government in planning for the development of modern stadia that meets the needs of AFL and AFLW.

2.2 Connected Pathways

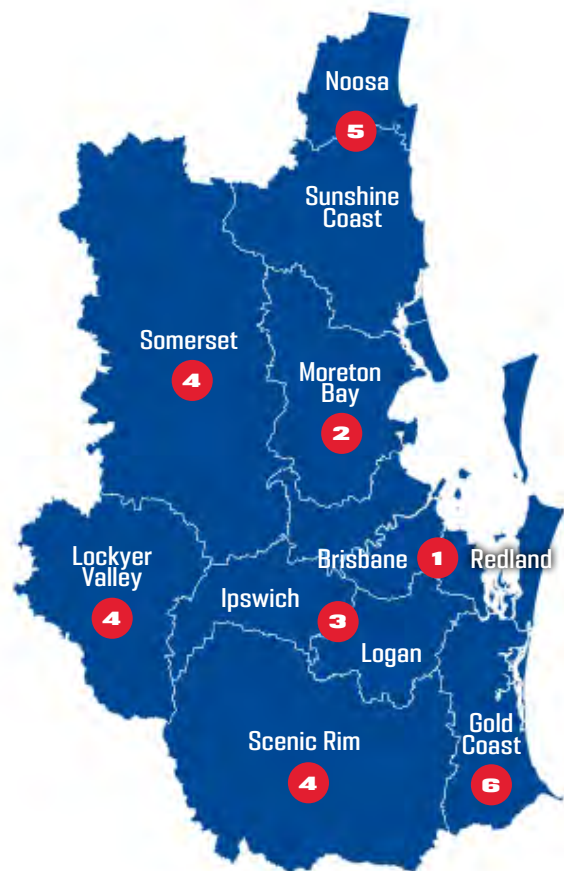
- Enhance QAFL and QAFLW venues to meet preferred facility guidelines for state league facilities

3.1 Better Together

- Establish partnerships with schools and invest in school infrastructure to enable community club access
- Develop a network approach to school venue access in partnership with the Department of Education and other land managers
- Partner with local government and other land managers to maximise facility provision through flexible management approaches

3.2 Embrace Innovation

- Increase capacity through access to flexible green space for training and program use
- Expand the offering of AFL programs through access to unique venues and indoor facilities



1

Increase Access and Flexible Management

Expand access to facilities within Brisbane City Council and Redland City Council, and explore opportunities via access to schools and multipurpose facility arrangements

4

Identify Demand and Increase Access

Work in partnership with Scenic Rim Regional Council, Lockyer Valley Regional Council and Somerset Regional Council to improve capacity and increase access to facilities in areas of identified demand

2

Enhance Capacity and Drive Facility Supply

Partner with City of Moreton Bay to ensure that facility supply caters for demand in existing and emerging communities

5

Enhance Capacity and Increase Access

Enhance facility capacity in new communities and improve access across the facility network in Sunshine Coast Council and Noosa Shire Council

3

Drive Facility Supply

Partner with Ipswich City Council and Logan City Council in planning for the facility supply and capacity needs of growing communities

6

Enhance Capacity and Innovation

Increase facility capacity in the City of Gold Coast through the installation of lighting, access to schools and use of flexible green space

REGIONAL QUEENSLAND PRIORITIES

AFL is played across a diverse range of communities throughout Regional Queensland. To continue to grow participation and facilitate events and talent pathways, AFL facilities must be developed to align with regional needs.

Increasing population in key regional centres will generate population of growth of 9% across Regional Queensland between 2021-2031.

Targeted investment into areas of need and locations that support participation growth will ensure AFL prospers across Regional Queensland.

Understanding local community needs and drivers for facility development will be vital to guiding facility investment priorities.

Focus Areas

1.1 Enhance Capacity

- Enhance the capacity and flexibility of the facility network, particularly in key regional centres and areas of participation growth
- Increase the number of venues with competition and training standard lighting

1.2 Safe and Inclusive

- Increase the proportion of facilities that provide gender-neutral player change facilities by 5% year-on-year
- Increase the proportion of facilities that provide gender neutral umpire change facilities by 5% year-on-year

2.1 Elite Experience

- Enhance AFL and AFLW capable facilities across Regional Queensland to expand the reach of elite content and fan engagement

2.2 Connected Pathways

- Enhance the network of pathway facilities in key regional locations to support talent development

3.1 Better Together

- Engage with all levels of government to plan for future facility supply needs and explore shared use arrangements to meet growing demand
- Partner with schools to expand the facility network and increase access for communities

3.2 Embrace Innovation

- Expand the offering of AFL programs through access to non-traditional venues and indoor facilities
- Reduce the impact of climate change and weather events through environmentally sustainable design



1

Cairns Region

Increase the capacity of competition and training venues, and continue to develop Cazalys Stadium

4

Remote Communities

Work with remote communities to identify opportunities to increase access to AFL through infrastructure provision

7

Wide Bay Region

Increase facility capacity at key venues, including the installation of lighting, and improve provision for umpires

2

Townsville Region

Improve access to gender-neutral change facilities and seek access to an all-year venue to support the talent pathway

5

Mackay Region

Increase capacity through the installation of lighting and improve access to gender-neutral change rooms

8

Darling Downs Region

Increase capacity through improvements to lighting provision and support co-location arrangements

3

Western Queensland Region

Improve facility provision and access to change rooms and amenities

6

Capricornia Region

Increase access to venues with multiple ovals and improve change room accessibility

9

Northern Rivers Region

Consolidate access to existing facilities and continue to improve facility access and quality across the network



Damien Mitchelmore

Venue & Government Partnerships Manager

E: Damien.Mitchelmore@afl.com.au

M: 0409 443 079

www.aflq.com.au